

house.

PARTNERSHIP

Moving estate agency on



h.

7

Martineau Drive
St Margarets
Richmond Lock TW1 1PZ

Set only a stone's throw away from Richmond Lock and the peaceful walks along the River Thames, an exceptional home, beautifully presented throughout and flooded with light, nestling within a delightful gated development

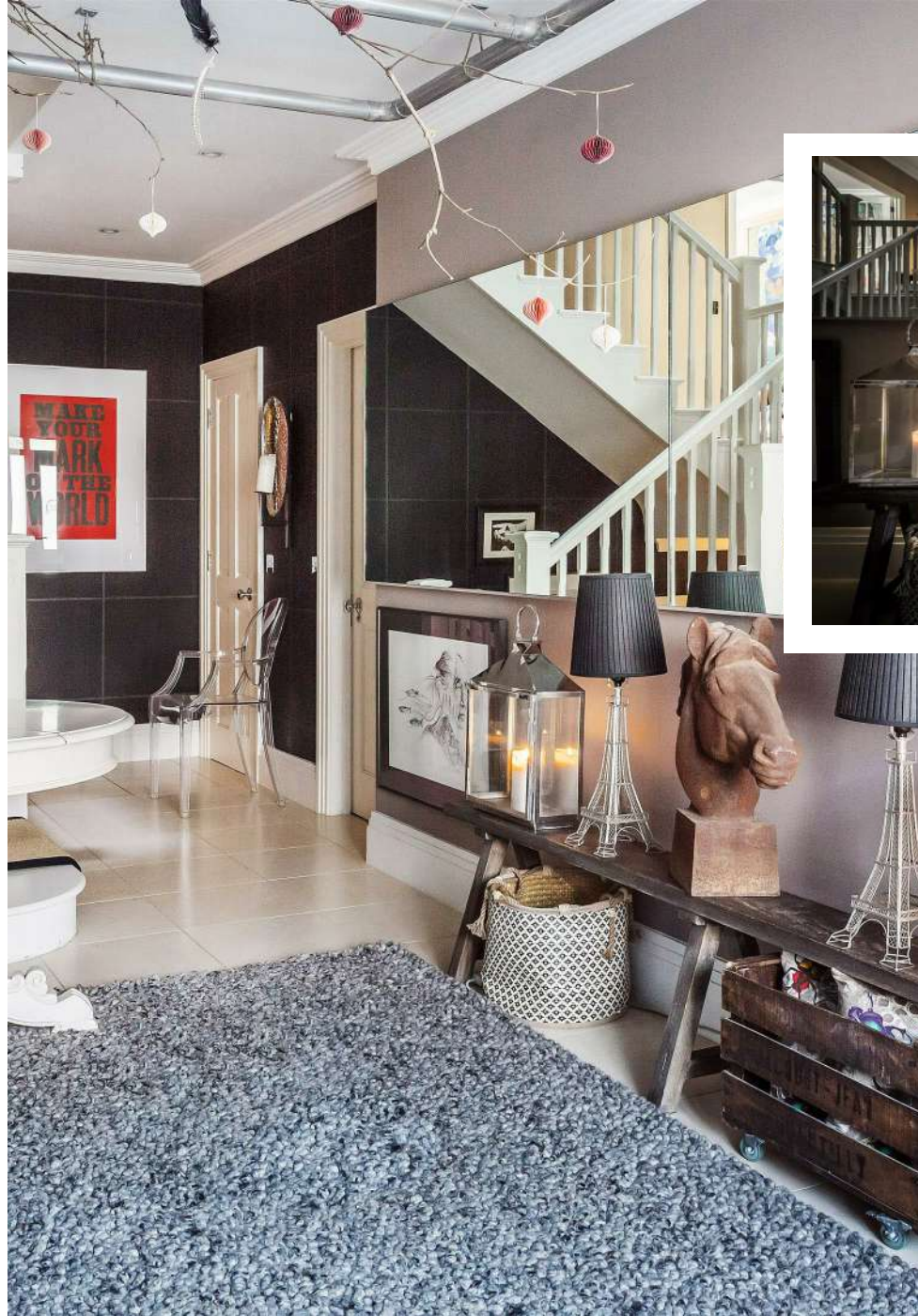
- Entrance hall
- Sitting room, balcony and 2 studies
- Kitchen / dining room, utility room and 2 cloakrooms
- Master bedroom with en suite bathroom
- Guest bedroom with en suite shower room
- 3 further bedrooms
- Family bathroom and further shower room
- Garage store and boiler room
- Gardens
- EPC: C



h.



h.



h.



h.

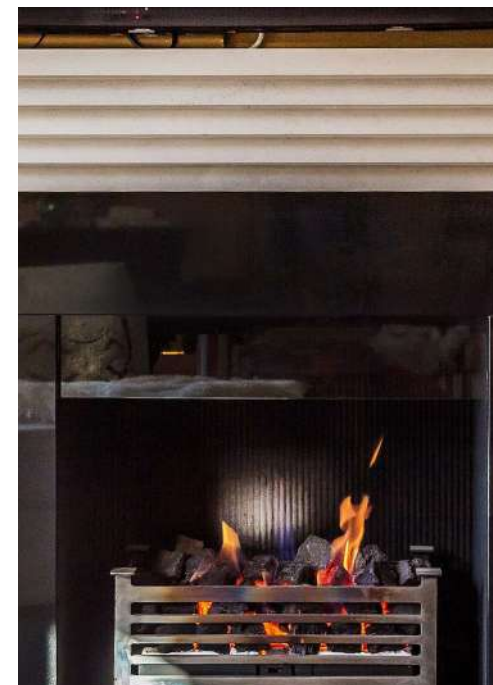


properties perfectly presented

h.



h.



h.



h.



properties perfectly presented



h.



h.



properties perfectly presented



h.



h.

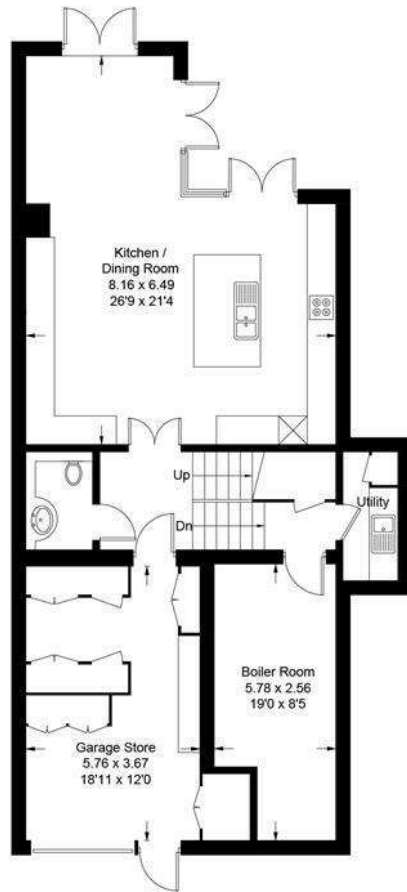


properties perfectly presented



h.

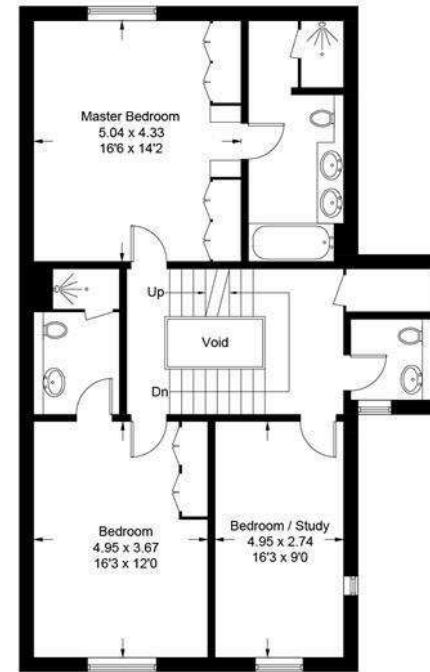
Approximate Gross Internal Area = 356.7 sq m / 3839 sq ft
(Excluding Voids / Including Garage Store / Boiler Room)



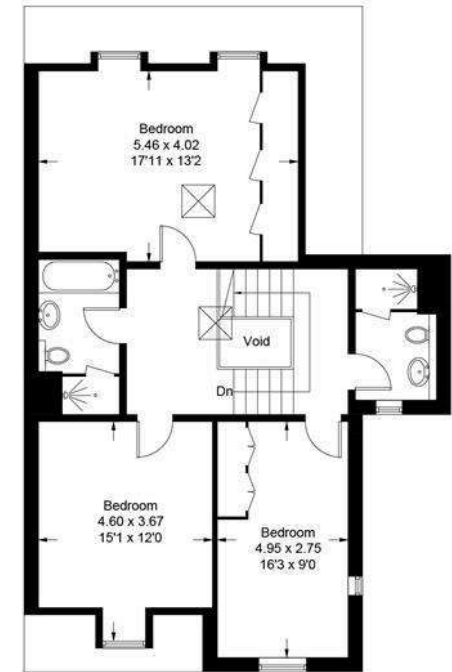
Lower Ground Floor



Ground Floor



First Floor



Second Floor

This plan is for layout guidance only. Not drawn to scale unless stated. Windows and door openings are approximate. Whilst every care is taken in the preparation of this plan, please check all dimensions, shapes and compass bearings before making decisions reliant upon them. (ID826053)

www.bagshawandhardy.com © 2022

h.

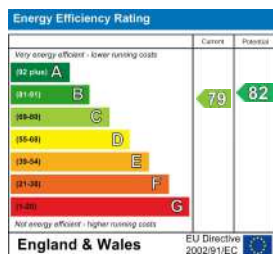
HOUSE INFORMATION

Approximate total gross internal area: House 3,839 sq ft / 356.7 sq m. (excluding Voids / including Garage Store / Boiler Room).

Services: All mains services. Gas-fired central heating. Underfloor heating except for the upper floor bedrooms. High speed broadband installed, available in all rooms on all floors.

Local authority: Richmond-upon-Thames Borough Council. Tel: 020 8891 1411.

Viewing: Strictly by appointment. Tel: 020 8947 9111.



t. 0800 917 0447

w. housepartnership.co.uk

f in p o